



Glebe Street, London, W4 2BD
Guide Price £1,095,000

WHITMAN & CO.
SALES · LETTINGS · COMMERCIAL

- Victorian terraced cottage
- Potential to extend and improve
- Close to numerous amenities
- Sought after position on the Glebe Estate
- 22' Through reception room
- No onward chain

Tenure - Freehold
Local Authority - Hounslow
Council Tax - Band F

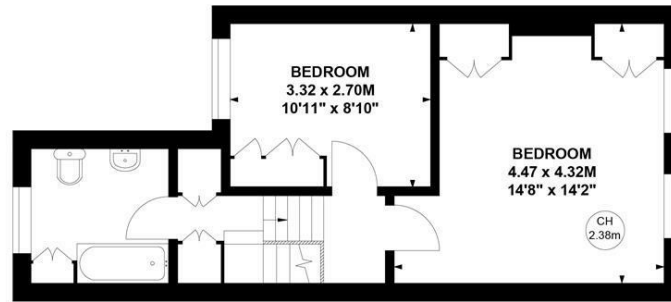
THE PROPERTY

A charming Victorian terraced cottage ideally located in the ever-popular Glebe Estate, offering close proximity to numerous amenities. The accommodation comprises two double bedrooms, a family bathroom, an L-shaped kitchen/dining room, a 22' through reception room, a 22' private garden, a guest cloakroom, and a large loft. This home offers you the perfect opportunity to extend and add your own taste and style, ideally situated moments from Chiswick High Road, Turnham Green Terrace and Devonshire Road with its cafes, bars, boutiques, shops and restaurants (including Michelin-starred La Trompette), along with numerous transport facilities and close proximity to Chiswick's best schools. No onward chain.

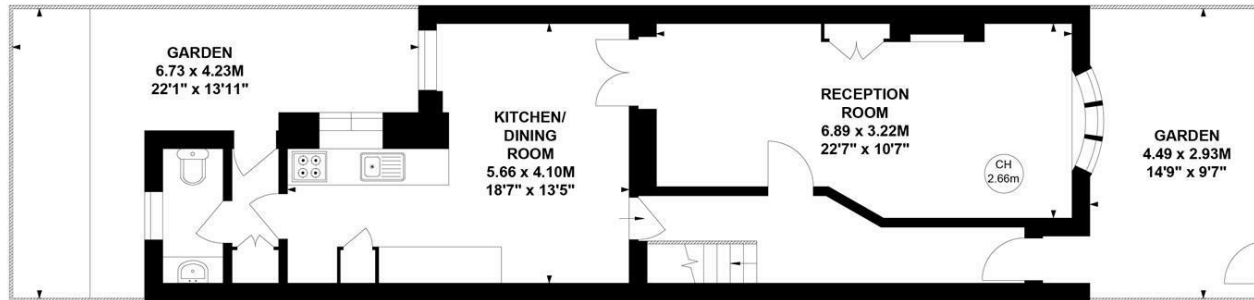
Glebe Street, W4

Approximate gross internal area
93.10 sq m / 1002 sq ft

Key :
CH - Ceiling Height



First Floor



Ground Floor

Not to scale, for guidance only and must not be relied upon as a statement of fact.

All measurements and areas are approximate only

SITUATION



5-7 Turnham Green Terrace, Chiswick, London, W4 1RG

Tel 020 8747 8800

E-mail sales@whitmanandco.com

Website www.whitmanandco.com

